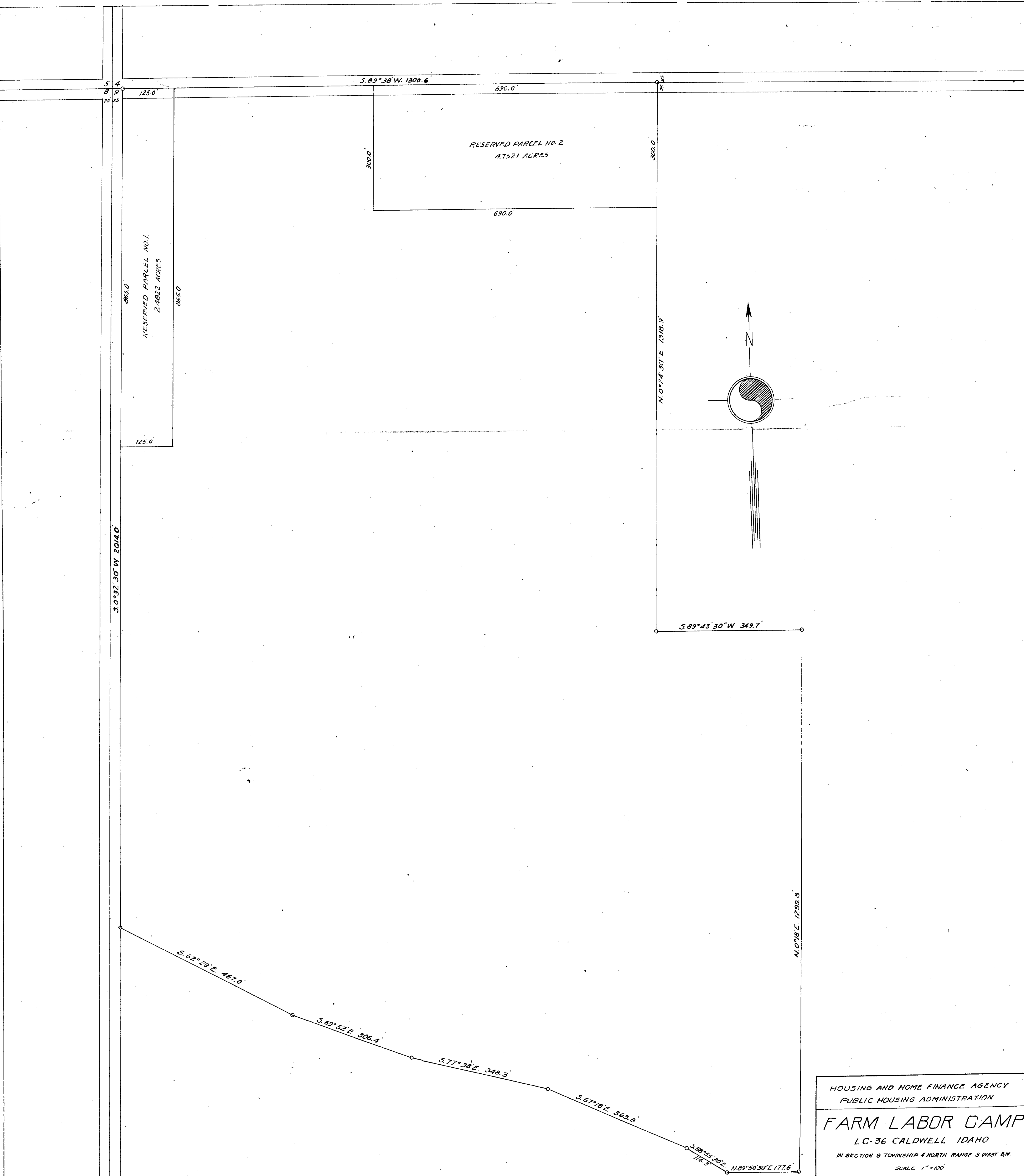


Attachment to Letter of July 13, 1953
To H. A. of the City of Caldwell, Idaho Re Contract
No. (IDA-IC-36-S)-2



5
8
23

125.0

S. 89° 38' W. 1300.6

690.0

300.0

RESERVED PARCEL NO. 2
4.7521 ACRES

300.0

690.0

300.0

RESERVED PARCEL NO. 1
2.4022 ACRES

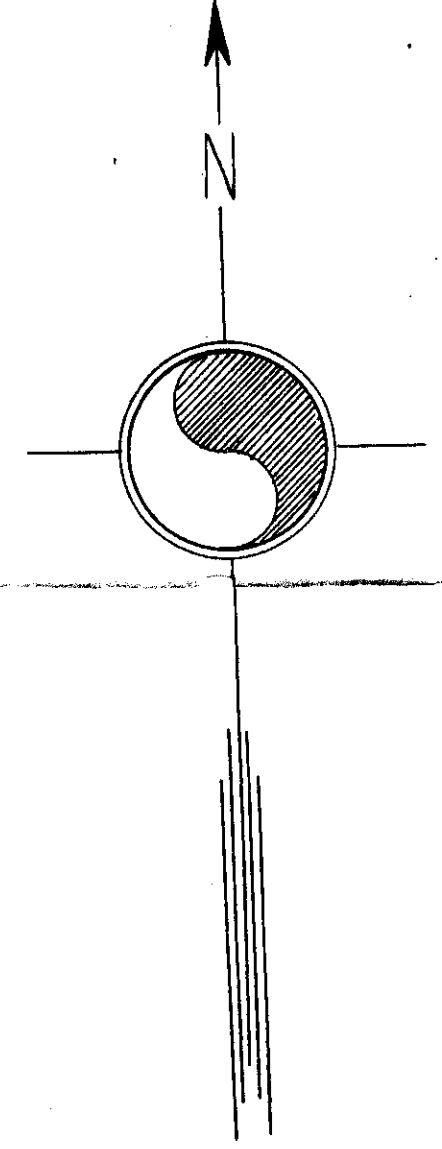
125.0

865.0

125.0

S. 0° 32' 30" W. 2014.0

N. 0° 24' 30" E. 1318.9



S. 89° 43' 30" W. 349.7

N. 0° 18' E. 1299.8

S. 62° 29' E. 467.0

S. 69° 52' E. 306.4

S. 77° 38' E. 348.3

S. 67° 18' E. 363.8

S. 59° 55' 30" E. 177.3
N. 89° 50' 30" E. 177.6

HOUSING AND HOME FINANCE AGENCY
PUBLIC HOUSING ADMINISTRATION
FARM LABOR CAMP
LC-36 CALDWELL IDAHO
IN SECTION 9 TOWNSHIP 4 NORTH RANGE 3 WEST 8N.
SCALE 1" = 100'